

TAPLA ME



TAPLA NY



TAPLA ZK

CHARACTERISTICS

Plug for fixing in laminated plasterboard panels.

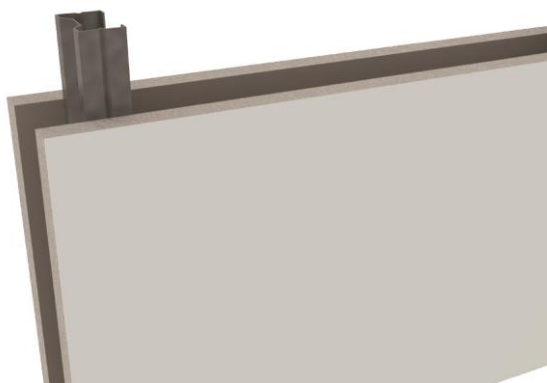
Previous drilling not required.

Variety of materials:

- TAPLAME: Zamak plug with included screw.
- TAPLANY: Nylon plug
- TAPLAZK: Zamak plug

Painting fixings, wall lighting, air conditioning evaporators, etc.

BASE MATERIAL



APPLICATION EXAMPLES

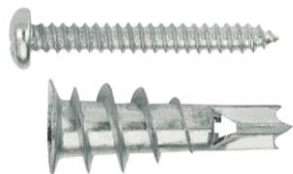


1. RANGE				
ITEM	CODE	SIZE	PHOTO	MATERIAL
1	TAPLAME	13 x 32 mm		Zamak
2	TAPLANY	15 x 33 mm		Nylon
3	TAPLAZK	13 x 37 mm		Zamak

2. INSTALLATION DATA

2.1 TAPLA

Drywall fixings plugs



TAPLAME



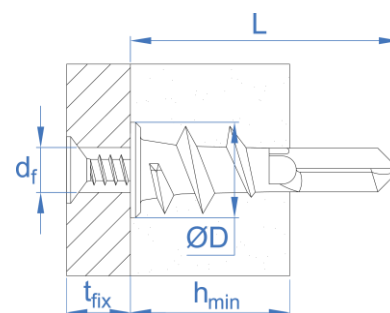
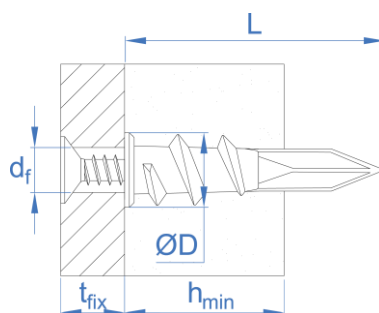
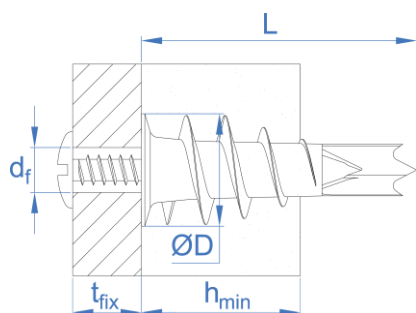
TAPLANY



TAPLAZK

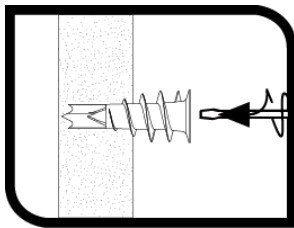
Installation data

CODE		TAPLAME	TAPLANY	TAPLAZK
L: plug length	[mm]	32	33	37
ØD: plug head diameter	[mm]	13	15	13
d _f : fixture hole diameter	[mm]	5		
h _{min} : base material thickness (min.-máx.)	[mm]	9 -16		
t _{fix} : maximum thickness of fixture	[mm]	8	8	12
Installation sockets		PH2/PH3	PH3	PZ3
Minimum depth of cavity	[mm]	25		
Recommended screw	[mm]	DIN 7981 4,2 x 32 incluido	TPPO 4,5 x 40 DIN 7981 4,2 x 38	TPPO 4,5 x 50 DIN 7981 4,2 x 50



3. INSTALLATION PROCEDURE

1. PREPARE THE DRILL

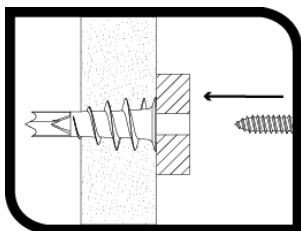


Set up the screwdriver PH2 or PH3 in the drill.

Reduce the drill torque in order to avoid damaging the drywall.

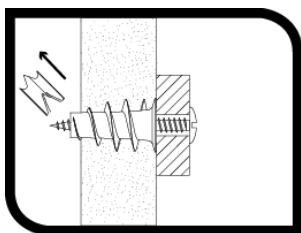
Switch to rotary drilling, adjusting the torque to avoid damaging the drywall.

*If plasterboard is damaged during installation due to excessive drill torque, stop this installation attempt and perform another at a distance no less than twice the plug length.



1. SET THE FIXTURE

Set the fixture in the chosen position.



1. APPLY THE TORQUE

Thread the screw, whether it is included in the box (TAPLAME) or the recommended in the previous table (TAPLANY, TAPLAZK), through the fixture, threading the screw over the previously installed plug.

Switch to rotary drilling, adjusting the torque to avoid overtighten the screw or the plug.

4. RESISTANCES

The maximum load recommended for an isolated plug in drywall (without spacing and edge distance effects) are specified in the following table

MAXIMUM LOAD RECOMMENDED

CODIGO	Carga [kg]
TAPLAME	8
TAPLANY	8
TAPLAZK	8